

Residential and Commercial Gas and Oil Furnaces

The most complete product line available.
Low operation cost with maximum efficiency.
C.S.A. design certified for U.S.A. and Canada.



HIGHBOY SERIES

Available for either residential, commercial or light industrial use. Input sizes from 70,000 to 1,000,000 BTU/Hr. These compact highboy models will fit into utility rooms, basements or right on a factory floor. Standard models are equipped with front flues; rear flues are available on special order.

Two stage firing is available on 700,000 and 1,000,000 BTU models.

HORIZONTAL SERIES

Especially designed for convenient installation in garages, attics or crawl space installations in homes, stores, service stations, factories and warehouses.

No furnace or utility room needed. Hanger channels, filters and 2-stage pump are optional. Two stage firing is available on 700,000 and 1,000,000 BTU models.



COUNTERFLOW SERIES

The Counterflow model is specifically designed for use in concrete slab buildings or those with crawl space areas using perimeter or radial type systems. Non-combustible base available for installation on wood floors. Available from 90,000 to 1,000,000 BTU/Hr. Standard models are equipped with

front flues; rear flues available on special order. Two stage firing is available on 700,000 and 1,000,000 BTU models.

LOWBOY SERIES

Designed for buildings or homes with basements; Heat exchangers are heavy gauge, cylindrical designed steel. Standard models are equipped with rear flue. Front flue models available on special order. Available from 90,000 to 1,000,000 BTU/Hr. Two stage firing is available on 700,000 and 1,000,000 BTU models.



CONVERTS EASILY TO COOLING

All of the furnaces shown here are easily adapted for use as summer air-conditioning units. Simply add a cooling package to an existing gas or oil-fired warm air furnace. All air-conditioners are air cooled and require no water source. Complete range of models and sizes are available.

Residential and Commercial Gas and Oil Furnaces

The most complete product line available.
Low operation cost with maximum efficiency.
U.L. design certified for U.S.A. and Canada.



HIGHBOY SERIES

Available for either residential, commercial or light industrial use. Input sizes from 70,000 to 1,000,000 BTU/Hr. These compact highboy models will fit into utility rooms, basements or right on a factory floor. Standard models are equipped with front flues; rear flues are available on special order.

Two stage firing is available on 700,000 and 1,000,000 BTU models.

HORIZONTAL SERIES

Especially designed for convenient installation in garages, attics or crawl space installations in homes, stores, service stations, factories and warehouses.

No furnace or utility room needed. Hanger channels, filters and 2-stage pump are optional. Two stage firing is available on 700,000 and 1,000,000 BTU models.



COUNTERFLOW SERIES

The Counterflow model is specifically designed for use in concrete slab buildings or those with crawl space areas using perimeter or radial type systems. Non-combustible base available for installation on wood floors. Available from 90,000 to 1,000,000 BTU/Hr. Standard models are equipped with

front flues; rear flues available on special order. Two stage firing is available on 700,000 and 1,000,000 BTU models.

LOWBOY SERIES

Designed for buildings or homes with basements; Heat exchangers are heavy gauge, cylindrical designed steel. Standard models are equipped with rear flue. Front flue models available on special order. Available from 90,000 to 1,000,000 BTU/Hr. Two stage firing is available on 700,000 and 1,000,000 BTU models.



CONVERTS EASILY TO COOLING

All of the furnaces shown here are easily adapted for use as summer air-conditioning units. Simply add a cooling package to an existing gas or oil-fired warm air furnace. All air-conditioners are air cooled and require no water source. Complete range of models and sizes are available.

COMMERCIAL & LARGE RESIDENTIAL

ADAMS Oil Furnaces

**Low operation cost
... with maximum efficiency**



HIGHBOY AACOV SERIES

Available for either large residential, commercial or light industrial use in four BTU input sizes: 175,000; 230,000; 350,000 and 500,000 with exposed burners. This compact highboy model will fit into utility rooms, basements or right on a factory floor. Standard models are equipped with front flues; rear flues are available on special order.



HORIZONTAL SUSPENDED ASO SERIES

Especially designed for convenient installation in garages, attics or crawl space installation in homes, stores, service stations, factories and warehouses. No furnace or utility room needed. Hanger channels, filters and 2-stage pump are optional. Available in three BTU input sizes: 175,000; 230,000 and 350,000. Burner is exposed on all sizes. Standard models are equipped with front flue; rear flue models are available on special order.

ADAMS... Oil Fired Warm Air Furnaces



COUNTERFLOW AOCF SERIES

The Counterflow model is specifically designed for use on concrete slab buildings or those with crawl space areas using perimeter or radial type systems. Non-combustible base available for installation on wood floors. Available in four BTU input sizes: 175,000; 230,000; 350,000 and 500,000. Standard models are equipped with front flues; rear flues available on special order. Burner is exposed on all models. Oil burner overhang is 9 inches.

LOWBOY MODEL AACO SERIES

Designed for buildings or large homes with basements; all Lowboy models are completely enclosed (except model AACO 350). Heat exchangers are heavy gauge, cylindrical designed steel. Cabinet of furniture steel finished with durable, baked silicone enamel. Standard models are equipped with rear flue; front flue models available on special order. Available in three BTU input sizes: 175,000; 230,000 and 350,000*.
* (exposed burner)



CONVERTS EASILY TO COOLING

All of the furnaces shown here are easily adapted for use as summer air-conditioning units. Simply add a cooling package to existing oil-fired warm air furnace. All air-conditioners are air cooled and require no water source. Complete range of models and sizes are available.

ADAMS

MANUFACTURING COMPANY

9790 Midwest Ave. • Cleveland, OH 44125
(216) 587-6801 • Fax (216) 587-6807

Form No. ALSOF 3/93

Features



DRAFT-O-STAT

Each Oil Furnace is equipped with a patented Draft-O-Stat, "The World's Finest Barometric Control." Draft-O-Stat is the exclusive trademark for the barometric draft control manufactured by Adams Manufacturing Company.

BLOWERS

Each furnace equipped with blower assembly designed for the individual model. Blower requires no lubrication and motor is equipped with overload protection shielded against TV and radio interference. Belt Drive Blowers on 350,000 and 500,000 BTU Input models.



HEAT EXCHANGER

Constructed of heavy gauge steel one piece, seamless, permanently gas tight. Center of combustion chamber is lined with pyro-ceramic fibers to further insure long life. Wrap around style.



CUTAWAY VIEW showing wrap around radiator type heat exchanger with long fuel passages and return air preheat.



PYRO-CERAMIC FIBER COMBUSTION CHAMBER

Preformed pyro-ceramic fiber combustion is a one-piece, factory installed, molded unit. Warm-up is practically instantaneous, thereby gaining immediate utilization of fuel at the start of burner ON cycle. Material has been proved in the searing heat of missile applications and other high-temperature requirements.

HIGH EFFICIENCY FLAME RETENTION OIL BURNER

The newest, finest solid-state oil heat controls feature a burner designed especially for these oil furnaces to give the most efficiency . . . quietly, and to use less fuel.



OIL FURNACES . . . Specifications and Connections

Model Number	BTU Input	BTU Bonnet Capacity	Heating Capacity	Width Casing Front	Depth Casing	Height Casing	Warm Air Discharge Opening	Cold Air Intake Opening	Height from Floor to Q of Flue	Blower Model Number	Flue Diameter and Location	Nozzle Size and Degree	Approx. Shipping Weight	Filter Sizes	HEATING CFM 3 Speed PCC Motor			COOLING CFM 3 Speed PCC Motor					
															Blower Pulley	Motor HP	CFM 20 SP	Blower Pulley	Motor HP	CFM 50 SP	Cooling		
LOWBOY																							
AACD175	175,000	140,000	133,000	27	59	50	22x22	16x22	33 1/4	12	6" Rear	1.25-70	430	2-16x20x1	Direct	1/2	1400	Direct	3/4	2000	5		
AACD230	230,000	184,000	178,000	29	63	54	24x24	20x24	48	12	8" Rear	1.65-70	530	2-20x25x1	Drive	3/4	1800	Drive	1	2100	5		
*AACD350	350,000	280,000	264,000	36	61 1/2	53	34x34	18x34	37	12 1/8	9" Rear	2.50-70	712	2-20x25x1	7"	1	2600	5"	1 1/2	3000	7 1/2		
HIGHBOY																							
AACDV175	175,000	140,000	132,000	27	27	72	22x22	2-19x24	56	12	6" Front	1.25-70	368	2-20x25x1	Direct	1/2	1400	Direct	3/4	2000	5		
AACDV230	230,000	184,000	174,000	30	30	74	26x26	2-19x24	63	12	8" Front	1.65-70	470	2-20x25x1	Drive	3/4	1800	Drive	1	2100	5		
*AACDV350	350,000	280,000	269,000	36	36	76	34x34	2-19x24	60	12 1/8	9" Front	2.50-70	670	2-20x25x1	7"	1	2600	5"	1 1/2	3000	7 1/2		
*AACDV500	500,000	400,000	395,000	42	42	96	38x38	4-18x22 1/2	86	15 1/2	12" Front	3.50-60	1000	4-20x25x1	8"	2	4000	7"	2	4200	10		
COUNTERFLOW																							
AACF175	175,000	140,000	133,000	27	27	72	23x23	20x25	36	12	6" Front	1.25-70	368	1-20x25x1	Direct	1/2	1400	Direct	3/4	2000	5		
AACF230	230,000	184,000	178,000	30	30	74	26x26	22x25	38	12	8" Front	1.65-70	470	2-18x25x1	Drive	3/4	1800	Drive	1	2100	5		
*AACF350	350,000	280,000	268,000	36	36	76	34x34	22x32	40	12 1/8	9" Front	2.50-70	670	4-18x18x1	7"	1	2600	5"	1 1/2	3000	7 1/2		
*AACF500	500,000	400,000	395,000	42	42	96	38x38	4-38x38	66	15 1/2	12" Front	3.50-60	1000	4-20x25x1	8"	2	4000	7"	2	4200	10		
SUSPENDED																							
ASD175	175,000	140,000	134,000	72	27	27	23x23	20x25	13 1/2	12	6" Front	1.25-70	368	1-20x25x1	Direct	1/2	1400	Direct	3/4	2000	5		
ASD230	230,000	184,000	176,000	74	30	30	26x26	22x25	15	12	8" Front	1.65-70	470	2-18x25x1	Drive	3/4	1800	Drive	1	2100	5		
*ASD350	350,000	280,000	266,000	76	36	36	34x34	32x32	19	12 1/8	9" Front	2.50-70	670	4-18x18x1	7"	1	2600	5"	1 1/2	3000	7 1/2		

Two stage fuel units are optional on all Suspended ASD Series. Filters and hanging channels are optional on all Suspended ASD Series Furnaces.

Energy efficiency Rating - Published in the Energy Guide - ask your dealer or distributor.

* Belt Drive only model.

** Rear Flue models may be special ordered for Front Flues and Front Flue models may be special ordered for Rear Flues. This is a factory option and is not a field changeable option.

ALL OIL FIRED FURNACES ARE NOT CREATED EQUAL

... that's why you need Adams ,
the worlds finest Furnaces

ADAMS

Deluxe High Efficiency OIL FURNACES

More Heat, Less Fuel for Comfort and Economy

Available in Four Different Models to Fit Every Heating Need

Available in up to Five Different BTU Ratings, From 70,000 To 140,000

All Models are Air Conditioning Ready - Simply add a Cooling Package and You'll Have a Dual Purpose Comfort Machine . . . Heating in the Winter and Whole House Air Conditioning in the Summer

up to
84.5%*
AFUE

● The super high efficiency oil burner coupled with our wrap-around heat exchanger and pyro-ceramic combustion chamber are the ingredients which boost up the efficiency level to make affordable and comfortable heating for today and tomorrow.

● More efficient combustion higher static air pressure provides better combustion, even in poor draft areas. Positive pre-mixing of oil and air produces excellent combustion characteristics. This power burner action accounts for a hotter flame...less fuel consumption.

● Non-condensing combustion, no drain line or sewer hook-up is required.



HIGHBOY AUFO Series

This power packed Highboy with burner and controls enclosed in a modern style cabinet fits easily into utility rooms or basements.

Available in five sizes:
70,000, 90,000,
105,000, 120,000
& 140,000 BTU.



COUNTERFLOW Series AOFC

Counterflow models are specifically designed for use in basementless homes using radial or perimeter type heating systems. The burner is exposed for easy access.

Available in four sizes, from 90,000 to 140,000 BTU input.

LOWBOY Series AACO

The Lowboy model is designed for homes with basements. All burners and controls are completely enclosed.

Available in four sizes from 90,000 to 140,000 BTU input.



HORIZONTAL SUSPENDED Series ASO

Designed for convenient installations in garages, attics, or crawl space installation in homes, stores, service stations, factories and warehouses. No furnace or utility room is needed. Hanger channels, filters and 2-stage pump are optional.

Available in four sizes from 90,000 to 140,000 BTU input.



*Tested according to
GAMA/D.O.E. Test procedures

ADAMS

Manufacturing Company

9790 Midwest Ave., Cleveland, Ohio 44125
Telephone (216) 587-6801
Fax (216) 587-6807

Draft-O-Stat

Each furnace is equipped with a patented Draft-O-Stat, the "World's finest" barometric control.

Direct-drive Blower

The furnace is equipped with a 3-speed, whisper quiet direct drive blower assembly. No lubrication is required. The motor is equipped with overload protection shielded against TV and radio interference. Blower assembly is isolated from the furnace by rubber pads to eliminate noise and vibration.

Pyro-ceramic Combustion Chamber

Prefomed pyro-ceramic fiber combustion chamber is a one piece, molded unit and factory installed in the heat exchanger. Warm-up is practically instantaneous, gaining immediate utilization of fuel at the start of the burner ON cycle.

**Wrap Around Heat Exchanger**

Constructed of heavy gauge, heat resistant steel . . . one piece, seamless, permanently gas tight . . . with a pyro-ceramic combustion chamber.

Flue gases to the chimney.

The Oil Gun Burner shoots an intense flame into the combustion chamber located in the bottom of the heat exchanger.



Hot combustion gases pass through these circular passage ways to create an extra long path for maximum heat extraction.

The powerful blower delivers return air over and between the concentric circular flue passage ways, transferring comfortable warm air to your home.



High Efficiency Oil Furnaces . . . specifications and connections

Model Number	BTU Input	Heating Capacity	Approx Shipping Weight	Motor HP	Heating CFM .20 SP	Cooling CFM .50 SP	Tons Cooling	Dimensions
LOWBOY *								
AACO 90 & 90-3	90,000	75,690	240	1/3	800	1200	3	Cabinet Height 42 1/2", Width 22", Depth 51 1/2"
AACO 105&105-3	105,000	87,360	240	1/3	1000	1200	3	Cold air intake opening 20" x 15"
AACO 120	120,000	99,440	250	1/3	1200	-	-	Warm air discharge 20" x 22"
AACO 120-3.5	120,000	99,440	250	1/2	-	1400	3.5	Height, floor to center of flue, 37"
AACO 140	140,000	115,640	260	1/2	1400	-	-	Two filters, one 10" x 20" x 1"
AACO 140-4	140,000	115,640	260	3/4	-	1600	4	and one 20" x 20" x 1"
HIGHBOY **								
AUFO 70 & 70-2.5	70,000	57,820	240	1/3	800	1000	2.5	Cabinet Height 60", Width 22", Depth 34"
AUFO 90 & 90-3	90,000	75,600	240	1/3	1000	1200	3	Cold air intake opening 19" x 24"
AUFO 105&105-3	105,000	87,570	240	1/3	1000	1200	3	Warm air discharge 20" x 22"
AUFO 120	120,000	101,400	250	1/3	1200	-	-	Height, floor to center of flue 50"
AUFO 120-3.5	120,000	101,400	250	1/2	-	1400	3.5	Filter 20" x 25" x 1"
AUFO 140	140,000	117,460	260	1/2	1400	-	-	
AUFO 140-4	140,000	117,460	260	3/4	-	1600	4	
COUNTERFLOW **								
AOCF 90 & 90-2.5	90,000	76,230	235	1/3	800	1200	3	Cabinet Height 63", Width 23", Depth 25"
AOCF 105&105-3	105,000	88,305	245	1/3	1000	1200	3	Cold air intake opening, 20" x 20"
AOCF 120	120,000	100,000	245	1/3	1200	-	-	Warm air discharge 18 1/2" x 18 1/2"
AOCF 120-3.5	120,000	100,000	245	1/2	-	1400	3.5	Height, floor to center of flue 34 1/2"
								Filter 20" x 20" x 1"
AOCF 140	140,000	116,060	315	3/4	1400	-	-	Cabinet Height 72", Width 27", Depth 27"
AOCF 140-4	140,000	116,060	315	3/4	-	1600	4	Cold air intake opening, 20" x 25"
								Warm air discharge 23" x 23"
								Height, floor to center of flue 36"
								Filter 20" x 25" x 1"
HORIZONTAL **								
ASO 90 & 90-2.5	90,000	76,230	235	1/3	800	1200	3	Cabinet Height 23", Width 63", Depth 25"
ASO 105 & 105-3	105,000	88,515	245	1/3	1000	1200	3	Cold air intake opening, 20" x 20"
ASO 120	120,000	100,800	245	1/3	1200	-	-	Warm air discharge 18 1/2" x 18 1/2"
ASO120-3.5	120,000	100,800	245	1/2	-	1400	3.5	Height, floor to center of flue 11 1/2"
								Filter 20" x 20" x 1"
ASO 140	140,000	117,180	315	3/4	1400	-	-	Cabinet Height 27", Width 72", Depth 27"
ASO 140-4	140,000	117,180	315	3/4	-	1800	4	Cold air intake opening, 20" x 25"
								Warm air discharge 23" x 23"
								Height, floor to center of flue 13 1/2"
								Filter 20" x 25" x 1"

* Front flue models available on special order. ** Rear flue models are available on special order. Specifications are subject to change without notice

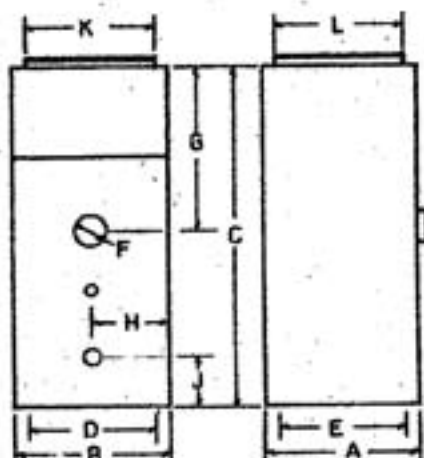
COUNTERFLOW SERIES

SPECIFICATIONS

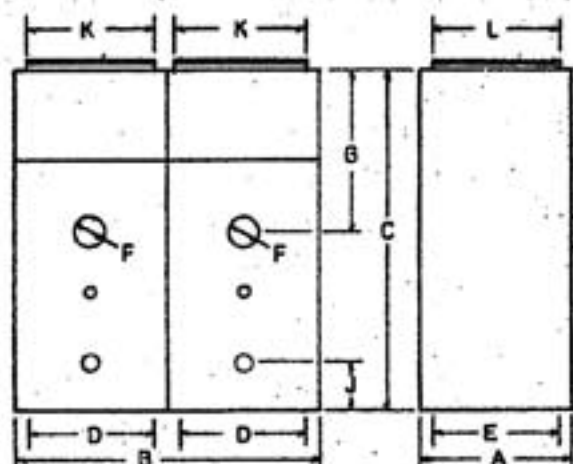
Model Number	BTU/Hr Input	BTU/Hr Output	CFM @.20 ESP Htg.	Mtr. H.P.	CFM @.50 ESP COOL	Mtr. H.P.	Flue Dia.
AOCF175	175,000	140,000	1400	1/2	2000	3/4	6"
AOCF230	230,000	184,000	1800	3/4	2100	1	8"
AOCF350	350,000	280,000	2600	1	3000	1-1/2	9"
AOCF500	500,000	400,000	4000	2	4200	2	12"
AOCF700	700,000	560,000	5200	(2) 2	6000	(2) 2	(2) 9"
AOCF1000	1,000,000	800,000	8000	(2) 2	8400	(2) 2	(2) 12"

Standard models are equipped with front flues; rear flues are available on special order.

DIMENSIONS



AOCF175 - AOCF500



AOCF700 - AOCF1000

MODEL NUMBER	A	B	C	D	E	F	G	H	J	K	L
AOCF175	27"	27"	72"	22"	22"	6"	30"	13.5"	9"	20"	25"
AOCF230	30"	30"	76"	26"	26"	8"	38"	15"	13"	32"	25"
AOCF350	36"	36"	76"	34"	34"	9"	30"	18"	13"	32"	32"
AOCF500	42"	42"	96"	38"	38"	12"	46"	21"	13"	40"	40"
AOCF700	36"	72"	76"	34"	34"	9"	30"	18"	13"	32"	32"
AOCF1000	42"	84"	96"	38"	38"	12"	46"	21"	13"	40"	40"

ADAMS MANUFACTURING COMPANY

9790 Midwest Ave. • Cleveland, Ohio 44125 Telephone (216) 587-6801 Fax (216) 587-6807 E-mail: Adamex@att.net
MAKERS OF CLEANAIRE®, HUMIDAIRE®, SPEEDFLAME®, INTERBURNER®, SPEEDY®, SPARKLITE®, UNI-PAK,™ AND DRAFT-O-STAT.®

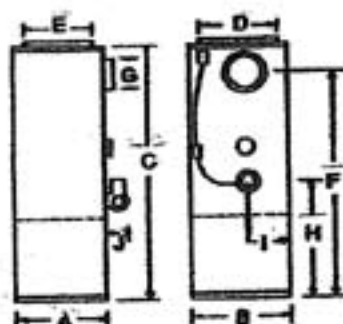
HIGHBOY SERIES

SPECIFICATIONS

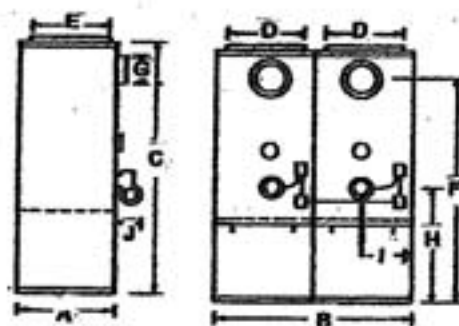
Model Number	BTU/Hr Input	BTU/Hr Output	CFM @.20 ESP Hg.	Mtr. H.P.	CFM @.50 ESP COOL	Mtr. H.P.	Flue Dia.
AACOV175	175,000	140,000	1400	1/2	2000	3/4	6"
AACOV230	230,000	184,000	1800	3/4	2100	1	8"
AACOV350	350,000	280,000	2800	1	3000	1-1/2	9"
AACOV500	500,000	400,000	4000	2	4200	2	12"
AACOV700	700,000	560,000	5200	(2) 2	6000	(2) 2	(2) 9"
AACOV1000	1,000,000	800,000	8000	(2) 2	8400	(2) 2	(2) 12"

Standard models are equipped with front flues; rear flues are available on special order.

DIMENSIONS



AACOV-175 - AACOV500



AACOV-700 - AACOV-1000

MODEL NUMBER	A	B	C	D	E	F	G	H	I	J
AACOV-175	27"	27"	72"	22"	22"	56"	6"	30"	13.5"	8"
AACOV-230	30"	30"	76"	26"	26"	63"	8"	36"	15"	10"
AACOV-350	36"	36"	76"	34"	34"	69"	9"	35"	18"	10"
AACOV-500	42"	42"	96"	38"	38"	86"	12"	46"	21"	10"
AACOV-700	36"	72"	76"	34"	34"	69"	9"	35"	18"	10"
AACOV-1000	42"	84"	96"	38"	38"	86"	12"	46"	21"	10"

ADAMS MANUFACTURING COMPANY

9790 Midwest Ave. • Cleveland, Ohio 44125 Telephone (216) 587-6801 Fax (216) 587-6807 E-mail: Adamsx@att.net
MAKERS OF CLEANAIRE®, HUMIDAIRE®, SPEEDFLAME®, INTERBURNER®, SPEEDY®, SPARKLITE®, UNI-PAK™ AND DRAFT-O-STAT®

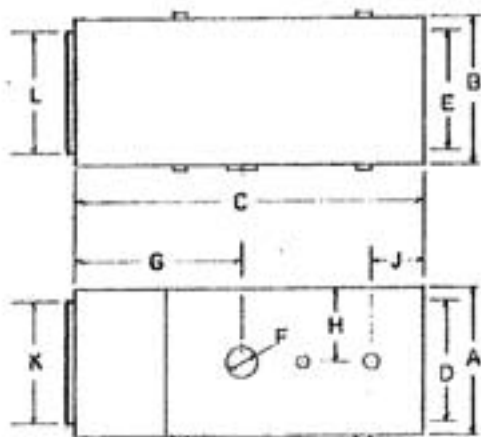
HORIZONTAL SERIES

SPECIFICATIONS

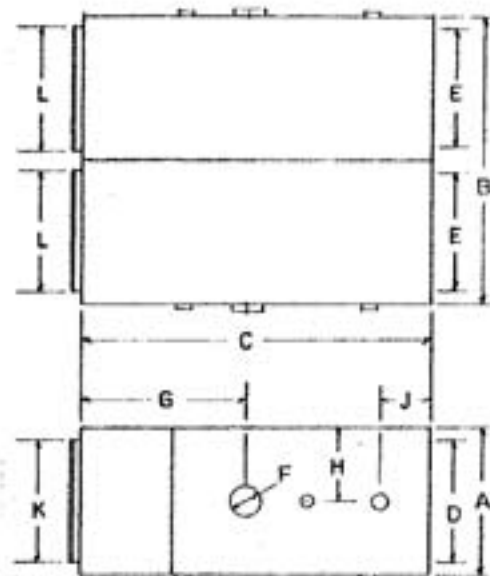
Model Number	BTU/Hr Input	BTU/Hr Output	CFM @.20 ESP Htg.	Mtr. H.P.	CFM @.50 ESP COOL	Mtr. H.P.	Flue Dia.
ASO175	175,000	140,000	1400	1/2	2000	3/4	6"
ASO230	230,000	184,000	1800	3/4	2100	1	8"
ASO350	350,000	280,000	2800	1	3000	1-1/2	9"
ASO500	500,000	400,000	4000	2	4200	2	12"
ASO700	700,000	560,000	5200	(2) 2	6000	(2) 2	(2) 8"
ASO1000	1,000,000	800,000	8000	(2) 2	8400	(2) 2	(2) 12"

Standard models are equipped with front flues; rear flues are available on special order.

DIMENSIONS



ASO175 - ASO500



ASO700 - ASO1000

MODEL NUMBER	A	B	C	D	E	F	G	H	J	K	L
ASO175	27"	27"	72"	22"	22"	6"	30"	13.5"	9"	20"	25"
ASO230	30"	30"	76"	26"	26"	8"	38"	15"	13"	32"	25"
ASO350	36"	36"	76"	34"	34"	9"	30"	18"	13"	32"	32"
ASO500	42"	42"	96"	38"	38"	12"	46"	21"	13"	40"	40"
ASO700	36"	72"	76"	34"	34"	9"	30"	18"	13"	32"	32"
ASO1000	42"	84"	96"	38"	38"	12"	46"	21"	13"	40"	40"

ADAMS MANUFACTURING COMPANY

9790 Midwest Ave. • Cleveland, Ohio 44125 Telephone (216) 587-6801 Fax (216) 587-6807 E-mail: Adamsx@att.net
 MAKERS OF CLEANAIRE®, HUMIDAIRE®, SPEEDFLAME®, INTERBURNER®, SPEEDY®, SPARKLITE®, UNI-PAK,™ AND DRAFT-O-STAT®

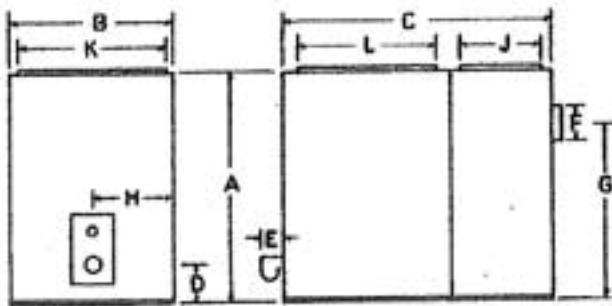
LOWBOY SERIES

SPECIFICATIONS

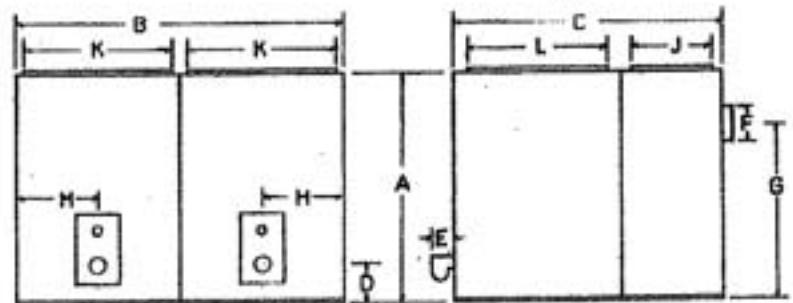
Model Number	BTU/Hr Input	BTU/Hr Output	CFM @.20 ESP Htg.	Mtr. H.P.	CFM @.50 ESP COOL	Mtr. H.P.	Flue Dia.
AACO175	175,000	140,000	1400	1/2	2000	3/4	8"
AACO230	230,000	184,000	1800	3/4	2100	1	8"
AACO350	350,000	280,000	2600	1	3000	1-1/2	9"
AACO500	500,000	400,000	4000	2	4200	2	12"
AACO700	700,000	560,000	5200	(2) 2	6000	(2) 2	(2) 9"
AACO1000	1,000,000	800,000	8000	(2) 2	8400	(2) 2	(2) 12"

Standard models are equipped with front flues; rear flues are available on special order.

DIMENSIONS



AACO-175 - AACO-500



AACO-700 - AACO-1000

MODEL NUMBER	A	B	C	D	E	F	G	H	J	K	L
AACO175	48.5"	27"	59"	8"	*	8"	33"	13.5"	16"	22"	22"
AACO230	52.5"	29"	63"	9"	*	8"	45"	14.5"	19"	24"	24"
AACO350	53"	36"	61.5"	11"	8.5"	9"	37"	18"	18"	34"	34"
AACO500	65"	42.5"	72.5"	12.5"	8.5"	12"	54"	21.25"	22"	38"	38"
AACO700	53"	72"	63"	11"	8.5"	9"	37"	18"	18"	34"	34"
AACO1000	65"	85"	72.5"	12.5"	8.5"	12"	54"	21.25"	22"	38"	38"

*AACO175/230 burner enclosed in furnace housing.

ADAMS MANUFACTURING COMPANY

9790 Midwest Ave. • Cleveland, Ohio 44125 Telephone (216) 587-6801 Fax (216) 587-6807 E-mail: Adamsx@att.net
MAKERS OF CLEANAIRE®, HUMIDAIRE®, SPEEDFLAME®, INTERBURNER®, SPEEDY®, SPARKLITE®, UNI-PAK,™ AND DRAFT-O-STAT®